



WORLD PARLIAMENT

A democratic non-military government based on establishing peace and solving environmental problems.



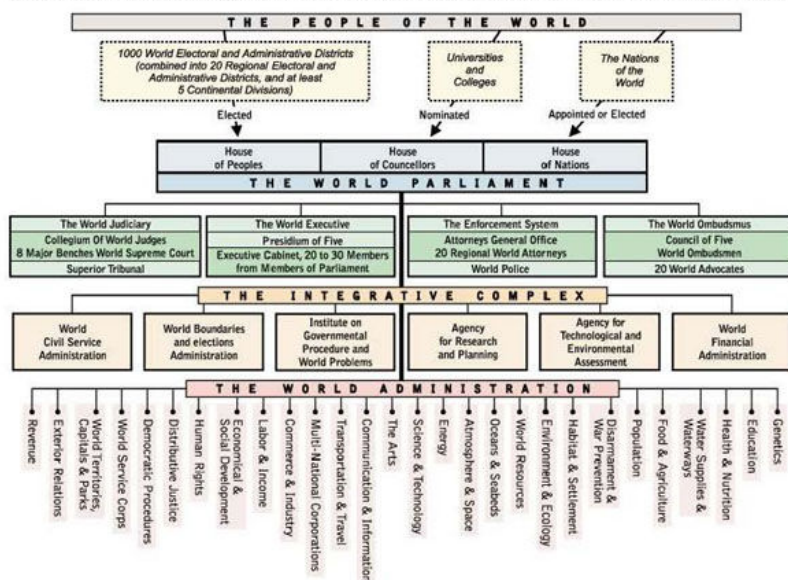
Connect With Us

Home World Parliament Constitution Legislative Acts Interfaith Liaisons Pledge of Allegiance
 Political Parties Earth Federation Federation Currency WCPA EERA CITCONFED Donate
 Contact Store
 Parliament Executive Administration Integrative Complex Judiciary Enforcement Ombudsmus

How World Government Works

RSS Print

DIAGRAM OF WORLD GOVERNMENT UNDER THE CONSTITUTION FOR THE FEDERATION OF EARTH



World Parliament Diagram

HOW WORLD GOVERNMENT WORKS

MAIN PROVISIONS OF THE CONSTITUTION FOR THE FEDERATION OF EARTH

adopted at the 1977 session of the World Constituent Assembly
and revised at the 1991 session.

WORLD PARLIAMENT, composed of three houses:

- House of Peoples, elected directly by the people equally from 1000 World Electoral and Administrative Districts.
- House of Nations, appointed or elected by national governments.
- House of Councillors of 200 elected by the other two houses, chosen for global perspective; has nominative, consultative, initiative and referral functions.

WORLD EXECUTIVE, elected by and responsible to the Parliament. Presidium of a rotating president and 4 vice-presidents, all M.P.s, nominated by House of Councillors. Executive Cabinet of 30 ministers, all M.P.s. The World Executive may not veto or suspend the Parliament or the Constitution.

WORLD ADMINISTRATION, of about 30 departments, each headed by a Cabinet Minister or Vice President; coordinated by a Secretary General chosen by the Presidium and confirmed by the Cabinet.

INTEGRATIVE COMPLEX, includes agencies for World Civil Service, Boundaries and Elections, Institute on Governmental Procedures and World Problems, Research and Planning, Technological and Environmental Assessment, World Financial Administration, and Legislative Review.

WORLD JUDICIARY, composed of 8 Benches having mandatory jurisdiction over different kinds of issues, with 5 continental seats. Collegium of World Judges is nominated by House of Councillors and elected by

Parliament, headed by a Presiding Council of 5 members which assigns judges to the several Benches.

THE ENFORCEMENT SYSTEM, non-military, is headed by an Office of World Attorneys General and commission of 20 Regional World Attorneys, elected by and removable by Parliament. The World Attorneys appoint the World Police (removable by the Parliament) to apprehend individual lawbreakers.

WORLD OMBUDSMUS, to protect human rights and ensure proper government functioning, is headed by a Council of 5 World Ombudsen nominated by House of Counsellors, and Commission of 20 Regional World Advocates, all elected by the Parliament.

BILL OF RIGHTS, of 18 sections, effective when Constitution is ratified.

DIRECTIONAL PRINCIPLES, of 19 sections, additional rights and benefits to be implemented over a period of time for all world citizens.

JURISDICTION OF WORLD GOVERNMENT, defined in Grant of Powers of 40 sections. Nations retain jurisdiction over internal affairs.

FOR ELECTIONS AND ADMINISTRATION, Earth is divided into 1000 Districts, 20 Regions, 10 Magna-Regions, at least 5 Continental Divisions.

FIVE WORLD CAPITALS, to be established in 5 continental divisions, one is the Primary Capital, the others are Secondary Capitals.

IMPLEMENTATION OF THE EARTH CONSTITUTION BY STAGES:

- Provisional World Government, before 25 countries have ratified.
- First Operative Stage, when 25 countries have ratified.
- Second Operative Stage, when 50% of countries have ratified.
- Full Operative Stage, when 80% of countries, comprising 90% of Earth's population, have ratified.

DISARMAMENT, of nations accomplished when constitution is ratified. The World Government does not retain nor use weapons of mass destruction.

VIALE AGENCIES OF THE U.N., are transferred to the World Government.

Comments

Type subject here...

[Home](#) [World Parliament](#) [Constitution](#) [Legislative Acts](#) [Interfaith Liaisons](#) [Pledge of Allegiance](#) [Political Parties](#) [Earth Federation](#)
[Federation Currency](#) [WCPA](#) [EERA](#) [CITCONFED](#) [Donate](#) [Contact](#) [Store](#)

webmaster@worldparliament-gov.org

Built with [Metro Publisher™](#)